

MOBILE ACRES MHP - VT0005171

Consumer Confidence Report - 2024

We are once again proud to present our annual water quality report covering all testing performed between January 1 and December 31, 2024. Included are the details about where your water comes from, what it contains, and how it compares to Environmental Protection Agency (EPA) and state standards over the years, we have dedicated ourselves to providing drinking water that meets all state and federal standards. We continually strive to deliver the best-quality drinking water to you. As new challenges to drinking water safety emerge, we remain vigilant in meeting the goals of source water protection, water conservation, and community education while continuing to serve the needs of all our water users. This report is designed to inform you about the quality water and services we deliver to you every day. Please remember that we are always available to assist you should you ever have any questions or concerns about your water.

To learn more, please call Patricia M. Beavers, Water System Operator at 802.763.3937 or write 19 Johnson Circle, Tunbridge, Vermont 05077. There are no regularly scheduled meetings; however, you can call your Property Manager, Tom Young at Vermont Housing at 802.295.4182.

Please share this information with all the other people who drink this water, especially those who may not have received this notice directly (for example, people in apartments, nursing homes, schools, and businesses). You can do this by posting this notice in a public place and distributing copies by hand or mail.

As required by the Lead and Copper Rule Revision, we have prepared a service line inventory. The purpose of the inventory was to determine if any of our service lines contain lead, galvanized pipe requiring removal, or unknown materials. Please contact us if you would like access to this inventory.

We take drinking water seriously and have qualified conscientious individuals on our staff who review the analysis and confirm the result if it is concerning around the maximum contaminant levels.

The water quality information presented in the tables is from the most recent round of testing done according to the regulations. All data shown were collected during the last calendar year unless otherwise noted in the tables.

The last several years have been challenging enough and drinking water is essential. Each year Mother Nature presents further challenges. We continue to ask you to help us help you by doing your part to keep the water safe when making its way to your tap. Each autumn check your service connection and get the heat tape ready and working properly for a long cold winter. Make sure the connection through your skirting is easy to get into during deep freezes and piles of snow. Please report low pressure and wet spots you notice in your yard. Check your outside hose bib or spigot often to make sure it isn't frozen, leaking or broken. We appreciate conservation during dry times as well. Check your home regularly for leaks. This includes all fixtures especially the toilet that will make a sound when the bowl is continuously filling. When we save a little, we save a lot. Also, please do not put fat, oil or grease and other material down your sinks or drains. Please reuse a can or glass jar for all cooking grease and dispose of it with the household trash.

Water Source Information

Your water comes from:

Source Name	Source Water Type
LAUNDRY #1	Groundwater
LAUNDRY #2	Groundwater

The State of Vermont Water Supply Rule requires Public Community Water Systems to develop a Source Protection Plan. This plan delineates a source protection area for our system and identifies potential and actual sources of contamination. Please contact us if you are interested in reviewing the plan. Our plan was approved on February 12, 2025. Please see the educational letter and source protection area Map at the end of this Report.

Drinking Water Contaminants

The sources of drinking water (both tap water and bottled water) include surface water (streams, lakes) and ground water (wells, springs). As water travels over the land's surface or through the ground, it dissolves naturally-occurring minerals. It also picks up substances resulting from the presence of animals and human activity. Some "contaminants" may be harmful. Others, such as iron and sulfur, are not harmful. Public water systems treat water to remove contaminants, if any are present.

In order to ensure that your water is safe to drink, we test it regularly according to regulations established by the U.S. Environmental Protection Agency and the State of Vermont. These regulations limit the amount of various contaminants:

Microbial contaminants, such as viruses and bacteria, which may come from sewage treatment plants, septic systems, agricultural livestock operations and wildlife

Inorganic contaminants, such as salts and metals, which can be naturally-occurring or result from urban storm water runoff, industrial or domestic wastewater discharges, oil and gas production, mining or farming.

Pesticides and herbicides, may come from a variety of sources such as storm water run-off, agriculture, and residential users.

Radioactive contaminants, which can be naturally occurring or the result of mining activity.

Organic contaminants, including synthetic and volatile organic chemicals, which are by-products of industrial processes and petroleum production, and also come from gas stations, urban storm water run-off, and septic systems.

Water Quality Data

The table below lists all the drinking water contaminants that we detected during the past year. It also includes the date and results of any contaminants that we detected within the past five years if tested less than once a year. The presence of these contaminants in the water does not necessarily show that the water poses a health risk.

Terms and abbreviations - In this table you may find terms you might not be familiar with. To help you better understand these terms we have provided the following definitions:

Action Level (AL): The concentration of a contaminant which, if exceeded, triggers treatment or other requirements which a water system must follow.

Contaminant: Any physical, chemical, biological, or radiological substance or matter in water.

Corrosion Control Efforts: Treatment (including pH adjustment, alkalinity adjustment, or corrosion inhibitor addition) or other efforts contributing to the control of the corrosivity of water, e.g., monitoring to assess the corrosivity of water.

Herbicide: Any chemical(s) used to control undesirable vegetation.

Level 1 Assessment: A level 1 Assessment is a study of the water system to identify potential problems and determine (if possible) why total coliform bacteria have been found in our water system.

Level 2 Assessment: A Level 2 Assessment is a very detailed study of the water system to identify potential problems and determine (if possible) why an E. coli MCL violation has occurred and/or why total coliform bacteria have been found in our water system on multiple occasions.

Locational Running Annual Average (LRAA): The average of sample analytical results for samples taken at a particular monitoring location during four consecutive calendar quarters.

Maximum Contamination Level (MCL): The "Maximum Allowed" MCL is the highest level of a contaminant that is allowed in drinking water. MCL's are set as close to the MCLG's as feasible using the best available treatment technology.

Maximum Contamination Level Goal (MCLG): The "Goal" is the level of a contaminant in drinking water below which there is no known or expected risk to human health. MCLG's allow for a margin of safety.

Maximum Residual Disinfectant Level (MRDL): The highest level of a disinfectant allowed in drinking water. Addition a disinfectant may help control microbial contaminants.

Maximum Residual Disinfectant Level Goal (MRDLG): The level of a drinking water disinfectant below which there is no known or expected risk to health. MRDLGs do not reflect the benefits of disinfectants in controlling microbial contaminants.

Method Reporting Limit: The lowest concentration of a chemical in a sample that a laboratory can reliably detect.

Nephelometric Turbidity Unit (NTU): NTU is a measure of the clarity of water. Turbidity in excess of 5 NTU is just noticeable to the average person.

Parts per million (ppm) or Milligrams per liter (mg/l): (one penny in ten thousand dollars)

Parts per billion (ppb) or Micrograms per liter (µg/l): (one penny in ten million dollars)

Parts per trillion (ppt) or Nanograms per liter (ng/l): (one penny in ten billion dollars)

Pesticide: Generally, any substance or mixture of substances intended for preventing, destroying, repelling, or mitigating any pest.

Picocuries per liter (pCi/L): a measure of radioactivity in water

Running Annual Average (RAA): The average of 4 consecutive quarters (when on quarterly monitoring); values in table represent the highest RAA for the year.

Treatment Technique (TT): A required process intended to reduce the level of a contaminant in drinking water.

90th Percentile: Ninety percent of the samples are below the action level. (Nine of ten sites sampled were at or below this level).

Per- and polyfluoroalkyl substances (PFAS): PFAS are a group of human-made chemicals that have been in use since the 1940s. PFAS have been found in a wide variety of consumer products and as an ingredient in firefighting foam. PFAS manufacturing and processing facilities, airports, and military installations are some of the contributors of PFAS releases into the air, soil and water. Vermont currently regulates 5 PFAS and this list includes:

Perfluorononanoic Acid (PFNA)

Perfluorooctanoic Acid (PFOA)

Perfluorooctane Sulfonic Acid (PFOS)

Perfluoroheptanoic Acid (PFHpA)

Perfluorohexane Sulfonic Acid (PFHxS)

Detected Contaminants MOBILE ACRES MHP

Chemical Contaminants	Collection Date	Highest Value	Range	Unit	MCL	MCLG	Typical Source
Iron	03/19/2024	0.048	0 - 0.048	ppm	NA	NA	Erosion of natural deposits
Nitrate	09/03/2024	3	0.54 - 3	ppm	10	10	Runoff from fertilizer use; Leaching from septic tanks, sewage; Erosion of natural deposits

PFAS Contaminants	
Typical Source	A large group of human-made chemicals used widely in manufacturing and consumer products
MCL	20 (individual or sum of the 5 regulated PFAS compounds)
Units	All units in parts per trillion (ppt)
ND	This means the contaminant was not detected at the laboratory Method Reporting Limit.

Collection Date	PFHpA	PFNA	PFHxS	PFOA	PFOS	Sum of 5 regulated PFAS compounds
10/18/2023	ND	ND	ND	ND	ND	ND
10/09/2020	ND	ND	ND	ND	ND	ND

*Additional PFAS, not regulated by the Vermont Water Supply Rule, may also have been detected in the past five years. Please contact us if you would like more information on other unregulated PFAS that may be in your drinking water.

Lead and Copper	Collection Date	90th Percentile	Range	Unit	AL*	Sites Over AL	Typical Source
Lead	09/28/2022	0	0 - 0	ppb	15	0	Corrosion of household plumbing systems; Erosion of natural deposits
Copper	09/28/2022	0.037	0 - 0.051	ppm	1.3	0	Corrosion of household plumbing systems; Erosion of natural deposits

*The lead and copper AL (Action Level) exceedance is based on the 90th percentile concentration, not the highest detected result.

**Complete lead tap sampling data (i.e. each individual sample result) are available for review. Please contact us if you would like to receive this data.

Health Information Regarding Drinking Water

Some people may be more vulnerable to contaminants in drinking water than the general population. Immuno-compromised persons such as persons with cancer undergoing chemotherapy, persons who have undergone organ transplants, people with HIV/AIDS or other immune system disorders, some elderly, and infants, can be particularly at risk from infections. These people should seek advice about drinking water from their health care providers. EPA/CDC guidelines on appropriate means to lessen the risk of infection by cryptosporidium and other microbiological contaminants are available from EPA's Safe Drinking Water Hotline (1-800-426-4791).

Drinking water, including bottled water, may reasonably be expected to contain at least small amounts of some contaminants. The presence of contaminants does not necessarily indicate that the water poses a health risk. More information about contaminants and potential health effects can be obtained by calling the Safe Drinking Water Hotline or visiting the website at <https://www.epa.gov/safewater/lead>.

Lead can cause serious health problems, especially for pregnant women and young children. Lead in drinking water is primarily from materials and components associated with service lines and home plumbing. MOBILE ACRES MHP is responsible for providing high quality drinking water and removing lead pipes, but cannot control the variety of materials used in plumbing components in your home. You share the responsibility for protecting yourself and your family from the lead in your home plumbing. You can take responsibility by identifying and removing lead materials within your home plumbing and taking steps to reduce your family's risk. Before drinking tap water, flush your pipes for several minutes by running your tap, taking a shower, doing laundry or a load of dishes. You can also use a filter certified by an American National Standards Institute accredited certifier to reduce lead in drinking water. If you are concerned about lead in your water and you wish to have your water tested, contact MOBILE ACRES MHP. Information on lead in drinking water, testing methods, and steps you can take to minimize exposure is available at <https://www.epa.gov/safewater/lead>.

Dear Neighbor,

We are working with the Vermont Department of Environmental Conservation Drinking Water and Groundwater Protection Division to develop a program to protect our groundwater supply. Groundwater as a drinking water supply source is generally of high quality; however, it is vulnerable to contamination from a wide range of activities which take place on the ground surface. Once the groundwater is contaminated, it is difficult and expensive to clean to a level which is suitable for drinking.

Because of the high cost associated with groundwater clean-up, we, The Mobile Acres Mobile Home Park water supply system, are in favor of a program of protection which reduces the risk of contamination our two groundwater resources. As part of this effort, we have identified that area of land, which directly contributes recharge to the public water supply source - see attached map. This is known as the source protection area (SPA). It is especially important that activities within the source protection area do not discharge contaminants, which may threaten the groundwater which is used for human consumption.

This letter was prepared with the intention of informing you that you have been identified as being located in the source protection area for our water supply system and to increase your awareness of this public groundwater resource. Improperly operated on-site septic disposal systems, accidental chemical spills, and underground fuel storage tanks are only a few examples of land use activities which threaten groundwater quality and of which we hope you will share our concern.

We are asking you to do your best to minimize the release of contaminants in the source protection area which could threaten our groundwater supply. We have information available to help you adopt these preventative practices.

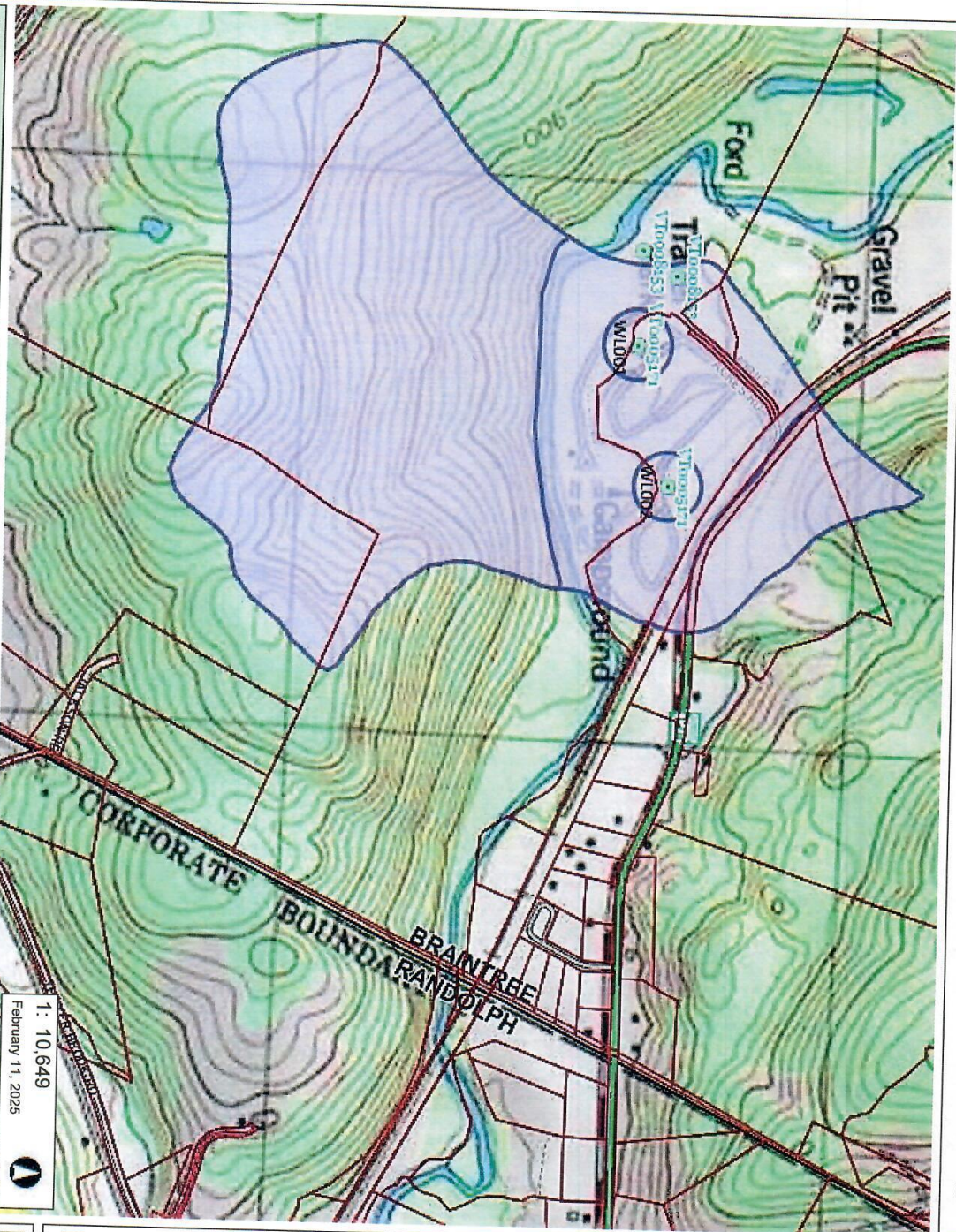
If you have any questions, want further information, or want to discuss this letter or your operating practices, please contact me 802.763.3937 I can, in turn, with your permission, contact the State Department of Environmental Conservation, Drinking Water and Groundwater Protection Division, or whomever else would best respond to your request.

Sincerely,

Patricia M. Beavers

Water System Operator

cc: Public Water System O&M Manual



541.0 0 270.00 541.0 Meters
 WGS_1984_Web_Mercator_Auxiliary_Sphere
 © Vermont Agency of Natural Resources
 1" = 887 Ft. 1cm = 106 Meters
 THIS MAP IS NOT TO BE USED FOR NAVIGATION
 DISCLAIMER: This map is for general reference only. Data layers that appear on this map may or may not be accurate, current, or otherwise reliable. ANR and the State of Vermont make no representations of any kind, including but not limited to, the warranties of merchantability, or fitness for a particular use, nor are any such warranties to be implied with respect to the data on this map.
 1: 10,649
 February 11, 2025



LEGEND

- Public Water Sources**
 - Active
 - Inactive
 - Proposed
 - Active Non-Public, Previously Perm
 - Inactive Non-Public, Previously Per
- SurfaceWaterSPA**
 - ACTIVE
 - INACTIVE
- Ground Water SPA**
 - Active/Shared
 - Proposed
 - Inactive
- Parcels (standardized)**
- Roads**
 - Interstate
 - US Highway: 1
 - State Highway
 - Town Highway (Class 1)
 - Town Highway (Class 2, 3)
 - Town Highway (Class 4)
 - State Forest Trail
 - National Forest Trail
 - Legal Trail
 - Private Road/Driveway
 - Proposed Roads
- Town Boundary**

NOTES

Map created using ANR's Natural Resources Atlas.
 SPA MAP: Location in Brantree, VT
 Updated Map 1